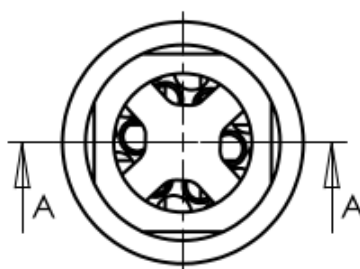
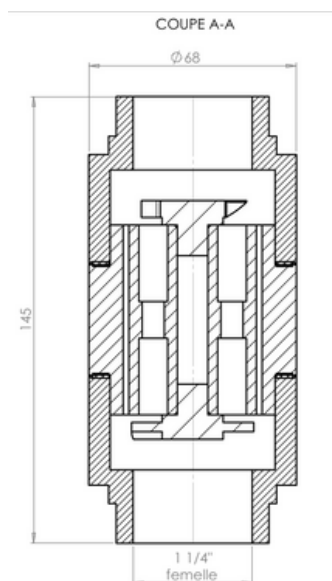


H97 < B-G7 < 9 : =7 < 9



Anti-slib DS-i32



Ü^Δ\^} α	DS-i32
Š&@# • { æ\!æ#	INOX 316L
P[{ ã æ\!æ# ^c\!	DN32
V^] ^\!^!ãã äã *	Vaste vrouwelijke draad
Ö\[[c\!^!^!ãã äã *	1"1/4
T æã æ\!^!^! cã äã\!ã *•&æ æã\!ã	95 l/min
T æã æ\!^!^! cã äã\!ã *•&æ æã\!ã	5,7 m3/h
Ö\ \c\! ã: ^} Áã\! æã æã\!ããc	220 mbar
T æã æ\!^!^!]^!æ ~\!	155°C
T ãã æ\!^!^!]^!æ ~\!	-20°C
T æã æ\!^!^! \	25 bars
V[c\!^!^! }^c	145 mm
Ó æ\!ãã æ\!^!^!^c\!	68 mm
Ö^, &@	2,2 kg

