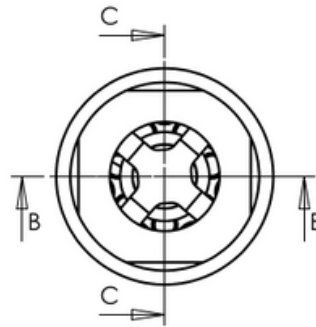
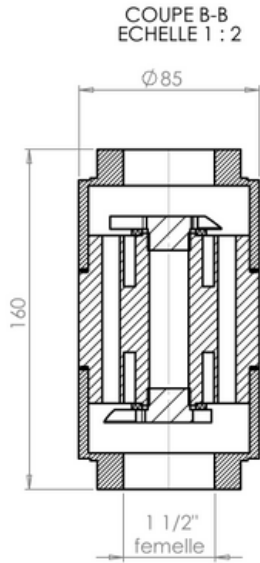


H97 < B-G7 < 9 : =7 < 9



# 5 bh!g`]V DS-i40



Ü^Δ!^} ¢	DS-i40
Š&@# • { æ!ãæ	INOX 316L
P[ { ã æ!ãæ ^c!	DN40
V^] ^!ãã äã *	Vaste vrouwelijke draad
Ö! [ [ c!ãã äã *	1"1/2
T æã æ!ãã @ ä!ã * • &æ æãã æ	158,3 l/min
T æã æ!ãã @ ä!ã * • &æ æãã æ	9,5 m3/h
Ö! \c! a: ^} Áãã æã æ!ããc	150 mbar
T æã æ!ãã { ]!æ ~!	155°C
T ãã æ!ãã { ]!æ ~!	-20°C
T æã æ!ãã \	25 bars
V[ c!ãã } * c	160 mm
Ó æ!ãã ^c!	85 mm
Ö^, &@	3,5 kg

